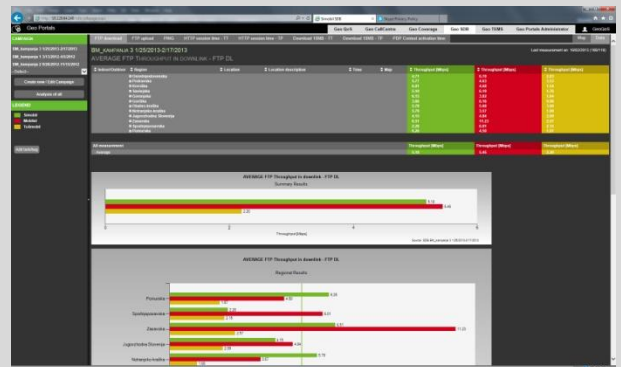


GeoSDB

Monitoring and visualization tool for Stationary Data Benchmark measurements

Stationary Data Benchmark is a visualization and monitoring tool for repeated measurements on about 100 predefined locations inside Slovenia. Measurements on locations are organized in a campaign which has predefined time period and number of locations.

Each campaign is analyzed to compare results for different operators.



Customer

Si.mobil (Mobile operator)

Benefits

Fast monitoring results, visualization of present and past events, high quality customer support, export data for reports

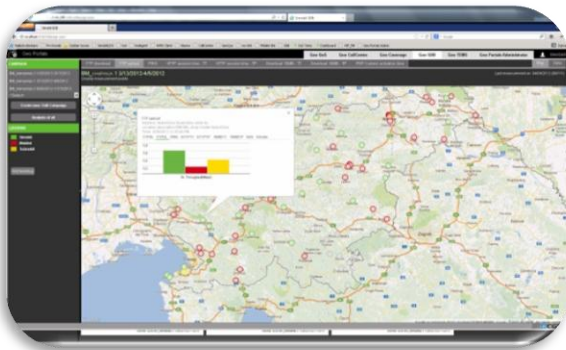
Used Technologies

Google Maps, MS Windows .NET, MS SQL

Implementation Time

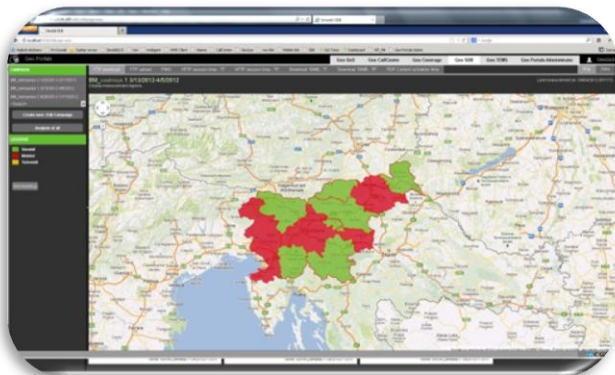
One to three months depend on size and complexity of existing system

GeoSDB



Mapping campaigns

For each campaign the results and ranks between operators are shown on a Google Maps. With simple mouse over users can get detailed information on a graph. Basic SDB data are FTP download and upload, HTTP session time TT, TP, download 10 MB TT, TP and PDP context activation time.



Zooming far away from location changed the display option from point to region level.

Reporting

Campaign analyses are additional features to compare results between different campaigns. Users can see the evolution of services over selected time period.

